

BALDOR® • RELIANCE 

Product Information Packet

EM44306T-4

300HP, 1190RPM, 3PH, 60HZ, L449T, TEFC, F1

| Part Detail | | | | | | | |
|-------------|----|-------------|------------|-------------|----------------------|---------------|------------|
| Revision: | E | Status: | PRD/A | Change #: | | Proprietary: | No |
| Type: | AC | Elec. Spec: | A44WG4970 | CD Diagram: | 416820-036 | Mfg Plant: | |
| Mech. Spec: | | Layout: | 617423-200 | Poles: | 06 | Created Date: | 04-09-2015 |
| Base: | | Eff. Date: | 09-05-2019 | Leads: | 3#2/0 (02 per group) | | |

| Specs | | | |
|--------------------------------|-------------------------|--------------------------------|--------------------|
| Catalog Number: | EM44306T-4 | Heater Indicator: | No Heater |
| Enclosure: | TEFC | Insulation Class: | F |
| Frame: | L449T | Inverter Code: | Inverter Ready |
| Frame Material: | Iron | IP Rating: | NONE |
| Output @ Frequency: | 300.000 HP @ 60 HZ | KVA Code: | G |
| Synchronous Speed @ Frequency: | 1200 RPM @ 60 HZ | Motor Lead Quantity/Wire Size: | 6 @ 2/0 AWG |
| Voltage @ Frequency: | 460.0 V @ 60 HZ | Motor Type: | A44208M |
| XP Class and Group: | None | Mounting Arrangement: | F1 |
| XP Division: | Not Applicable | Power Factor: | 86 |
| Agency Approvals: | CCSA US | Product Family: | General Industrial |
| | CSA EEV | Pulley End Bearing Type: | Ball |
| Auxillary Box: | No Auxillary Box | Pulley Face Code: | Standard |
| Base Indicator: | Rigid | Shaft Ground Indicator: | No Shaft Grounding |
| Bearing Grease Type: | Polyrex EM (-20F +300F) | Shaft Rotation: | Reversible |
| Current @ Voltage: | 340.000 A @ 460.0 V | Shaft Slinger Indicator: | No Slinger |
| Design Code: | B | Speed Code: | Single Speed |
| Drip Cover: | No Drip Cover | Motor Standards: | NEMA |
| Duty Rating: | CONT | Starting Method: | Direct on line |

| | | | |
|-------------------------|-------------|----------------------------------|------|
| Feedback Device: | NO FEEDBACK | Thermal Device - Bearing: | None |
| Frame Prefix: | L | Thermal Device - Winding: | None |

Nameplate NP2496L

MOBIL POLYREX EM

| Nameplate NP2349L | | | | | | | | | | | |
|-------------------|---------------|-------|-----|--------------|------------|--------|-------------------------|-------|-------|-----------------------|----|
| SPEC NO. | A44-7111-4970 | | | CAT.NO. | EM44306T-4 | | | FRAME | L449T | | |
| HP | 300 | VOLTS | 460 | PHASE | 3 | DESIGN | B | TYPE | P | | |
| RPM | 1190 | AMPS | 340 | HZ | 60 | AMB | 40 | SF | 1.15 | | |
| DRIVE END BEARING | 110BC02J30X | | | DUTY | CONT | | INSUL.CLASS | F | | | |
| OPP D.E. BEARING | 90BC03J30X | | | ENCL | TEFC | | CODE | G | | | |
| SER.NO. | | | | POWER FACTOR | 86 | | NEMA-NOM-EFFICIENCY | 95.8 | | | |
| | | | | | | | MAX CORR KVAR | 61 | | GUARANTEED EFFICIENCY | 95 |
| | | | | | | | NEMA NOM/CSA QUOTED EFF | | | | |
| | | | | | | | MOTOR WEIGHT | | | | |

| Parts List | | |
|-------------|---------------------------------------|----------|
| Part Number | Description | Quantity |
| SA299256 | SA A44-7111-4970 | 1.000 EA |
| RA286270 | RA A44-7111-4970 | 1.000 EA |
| 421948051 | LABEL, MYLAR | 1.000 EA |
| NP2496L | MOTOR LUBE NAMEPLATE | 1.000 EA |
| 000613006PU | N/P (RELEASE QTY 10,000) UL CSA LABEL | 1.000 EA |
| 000692000FF | N/P | 1.000 EA |
| 000692000VD | LABEL WARNING | 1.000 EA |
| NP2349L | SUPER-E ,SS, CSA, CSA SUPER-E | 1.000 EA |
| 089490099A | G28 BRKT 089490098WCA KB | 1.000 EA |
| 083199082A | G28 FAN COVER MACHINING SHORT VERSION | 1.000 EA |
| 034180014DA | KEY 1/4X1/4X1-3/4 L | 1.000 EA |
| 412118006A | DRAIN | 2.000 EA |
| 702618004T | FAN KB 182/70 (112) 440 | 1.000 EA |
| 004824015A | GREASE POLYREX EM | 1.160 LB |
| 032018020FK | HHCS 3/4-10X2-1/2 PLTD. | 4.000 EA |
| 032018008CK | HHCS 3/8-16X1L PLATED | 4.000 EA |
| 032018030DK | HHCS 1/2-13X3-3/4 PLTD. | 3.000 EA |
| 415096002A | CPLG 1/8 HEX TYPE | 1.000 EA |
| 415045002A | SLGR | 1.000 EA |
| 410700004A | WSHR | 1.000 EA |
| 034017014AB | LCKW 3/8 STD. PLATED | 4.000 EA |
| 034530064AB | P/NIP 1/8 X 8" L Pipe Nipple | 1.000 EA |
| 034690005AB | PPLG 3/4 PLATED | 2.000 EA |
| 034690002AB | PPLG 1/4" PLTD. | 1.000 EA |

| Parts List (continued) | | |
|------------------------|--|----------|
| Part Number | Description | Quantity |
| 034630002AB | CPLG 1/4" PLATED | 1.000 EA |
| 034530064BB | P/NIP 1/4X8 PLATED | 1.000 EA |
| 032620016LA | SOCKET SET SCREW-449 | 3.000 EA |
| 702623022A | G28 AIR DEFLECTOR DRIVE END -- PLASTIC | 1.000 EA |
| 418151014H | RETAIN RING | 1.000 EA |
| 034630002AB | CPLG 1/4" PLATED | 1.000 EA |
| 034530064BB | P/NIP 1/4X8 PLATED | 1.000 EA |
| 034690002AB | PPLG 1/4" PLTD. | 1.000 EA |
| 702623013A | THERMAL BARRIER -- G28 -- BRACKET MTD | 1.000 EA |
| 032018004BK | HHCS 5/16-18X1/2 PLATED | 3.000 EA |
| 034017013AB | LCKW 5/16 STD. PLATED | 3.000 EA |
| 089490101A | G28 BRKT 089490100WCA | 1.000 EA |
| 032018020FK | HHCS 3/4-10X2-1/2 PLTD. | 4.000 EA |
| 032018030DK | HHCS 1/2-13X3-3/4 PLTD. | 3.000 EA |
| 415045002D | SLGR - 440 V1T45B | 1.000 EA |
| 034530064AB | P/NIP 1/8 X 8" L Pipe Nipple | 1.000 EA |
| 415096002A | CPLG 1/8 HEX TYPE | 1.000 EA |
| 032018006BK | HHCS 5/16-18X3/4 PLATED | 3.000 EA |
| 034017013AB | LCKW 5/16 STD. PLATED | 3.000 EA |
| 034001013AB | FLTW BAFFLE | 3.000 EA |
| 415915007G | GASK, LAC | 1.000 FT |
| 406056008A | GASKET, TERBD 440 | 1.000 EA |
| 415039027A | GASKET, G28 LEAD THROAT | 1.000 EA |
| 418150003A | GREASE FITTING CAP | 1.000 EA |

Product Information Packet: EM44306T-4 - 300HP,1190RPM,3PH,60HZ,L449T,TEFC,F1

| | | |
|-------------|---------------------------------------|----------|
| 032018008DK | HHCS 1/2-13X1 PLATED | 4.000 EA |
| 702616012T | CONDUIT BOX | 1.000 EA |
| 035000001A | ALFTG 1/8" 1610-BL | 1.000 EA |
| 406099000A | PLUG - FAN COVER 320-440 | 1.000 EA |
| 035000001A | ALFTG 1/8" 1610-BL | 1.000 EA |
| 418150003A | GREASE FITTING CAP | 1.000 EA |
| 415030115A | G28 C/BOX 415030114WCA | 1.000 EA |
| 032130014DB | HSHCS1/2-13X1-3/4 PLATE | 4.000 EA |
| 034000016AB | WSHR .531ID 1.062OD .095 | 4.000 EA |
| MG1025Y17 | WILKOFAS, 789.701, SUPER E PEARL GOLD | 0.500 GA |
| 033775004EA | DRSCR #6-1/4 304 S.S. | 2.000 EA |
| 034180054KA | 7/8 SQ X 6.75 KEY | 1.000 EA |
| 604797032 | 447/449 WIDE SHIPPING SKID | 1.000 EA |
| 032510026D | CARRIAGE BOLT - 440 | 2.000 EA |
| 034001016AB | WSHR .562ID 1.375OD .109 | 2.000 EA |
| 034001014AB | FLAT WASHER 3/8"PLATED | 2.000 EA |
| 033300014AC | HEX NUT, SHIPPING - 400 | 2.000 EA |
| 604799003C | PLASTIC BAG 42X32X46 | 1.000 EA |

| | | | | | | |
|-----------|---------------|-------------------|-----------|---|-------------|-------|
| REL. S.O. | FRAME | HP | TYPE | PHASE/HERTZ | RPM | VOLTS |
| | L449T | 300 | P | 3/60 | 1190 | 460 |
| AMPS | DUTY | AMB °C/ INSUL. | S.F. | NEMA DESIGN | CODE LETTER | ENCL. |
| 340 | CONT | 40/F | 1.15 | B | G | TEFC |
| E/S | ROTOR | TEST S.O. | TEST DATE | STATOR RES @25 °C (OHMS BETWEEN LINES) | | |
| 401936 | 418143-087-SE | --- | --- | .0136 | | |

PERFORMANCE

| LOAD | HP | AMPERES | RPM | POWER FACTOR % | EFFICIENCY % |
|---------|------|---------|------|----------------|--------------|
| NO LOAD | 0 | 87.9 | 1200 | 4.08 | 0 |
| 1/4 | 75.1 | 120 | 1197 | 62.1 | 94.5 |
| 2/4 | 150 | 181 | 1195 | 80.8 | 96.2 |
| 3/4 | 225 | 257 | 1192 | 85.2 | 96.3 |
| 4/4 | 300 | 340 | 1189 | 85.9 | 96.0 |
| 5/4 | 375 | 427 | 1186 | 86.1 | 95.5 |

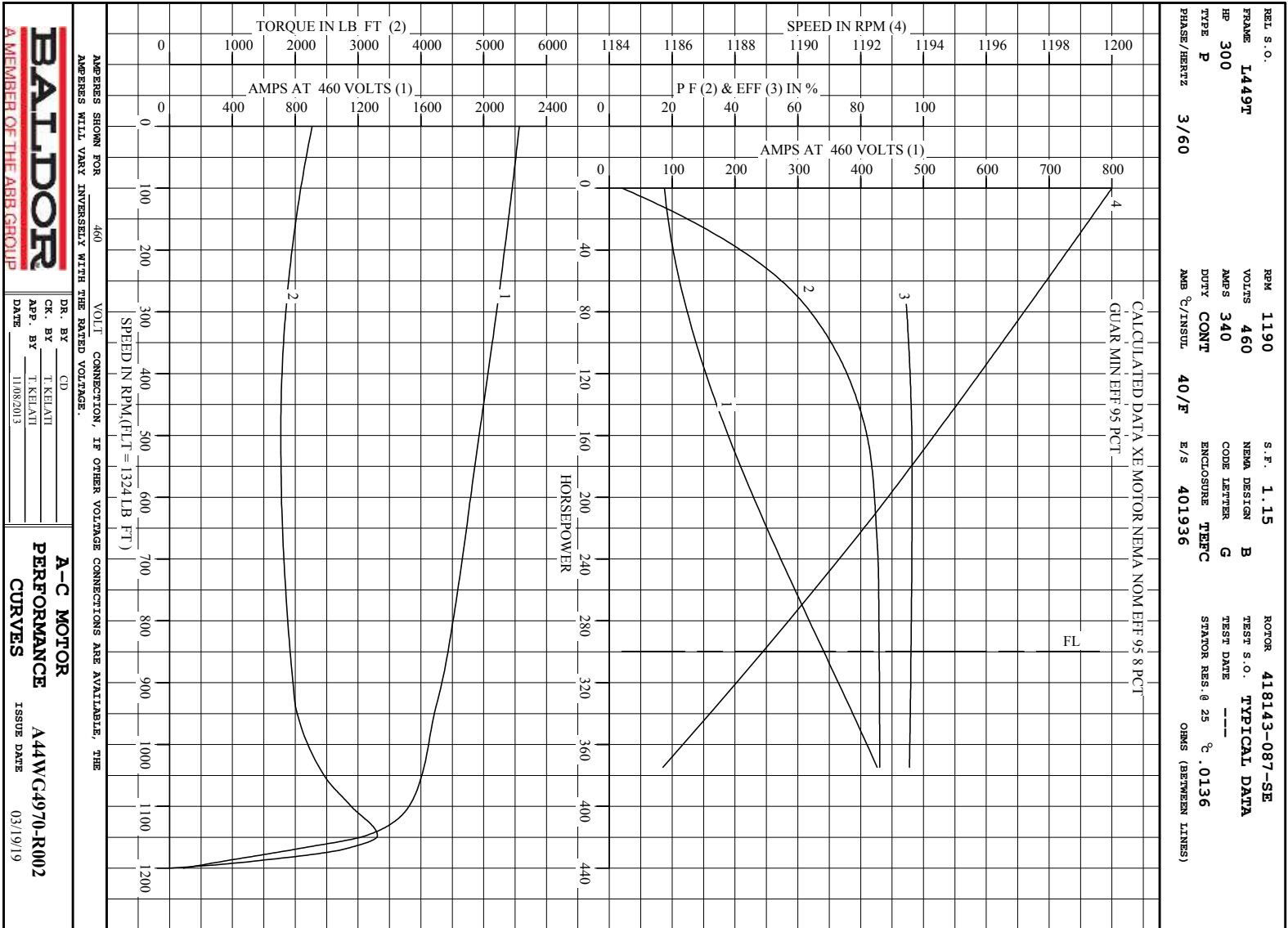
SPEED TORQUE

| | RPM | TORQUE % FULL LOAD | TORQUE LB.-FT. | AMPERES |
|--------------|------|--------------------|----------------|---------|
| LOCKED ROTOR | 0 | 171 | 2269 | 2227 |
| PULL UP | 500 | 134 | 1769 | 1971 |
| BREAKDOWN | 1148 | 250 | 3309 | 1248 |
| FULL LOAD | 1189 | 100 | 1324 | 340 |

AMPERES SHOWN FOR 460. VOLT CONNECTION. IF OTHER VOLTAGE CONNECTIONS ARE AVAILABLE, THE AMPERES WILL VARY INVERSELY WITH THE RATED VOLTAGE

REMARKS : TYPICAL DATA
CALCULATED DATA XE MOTOR NEMA NOM EFF 95.8 PCT
GUAR MIN EFF 95 PCT

| | | | |
|--|------------|------------|------------------|
|  A MEMBER OF THE ABB GROUP | DR. BY | CD | A-C MOTOR |
| | CR. BY | T. RELIANT | PERFORMANCE DATA |
| APP. BY | T. RELIANT | ISSUE DATE | A44WG4970-R002 |
| DATE | 11/08/2013 | | 03/19/19 |

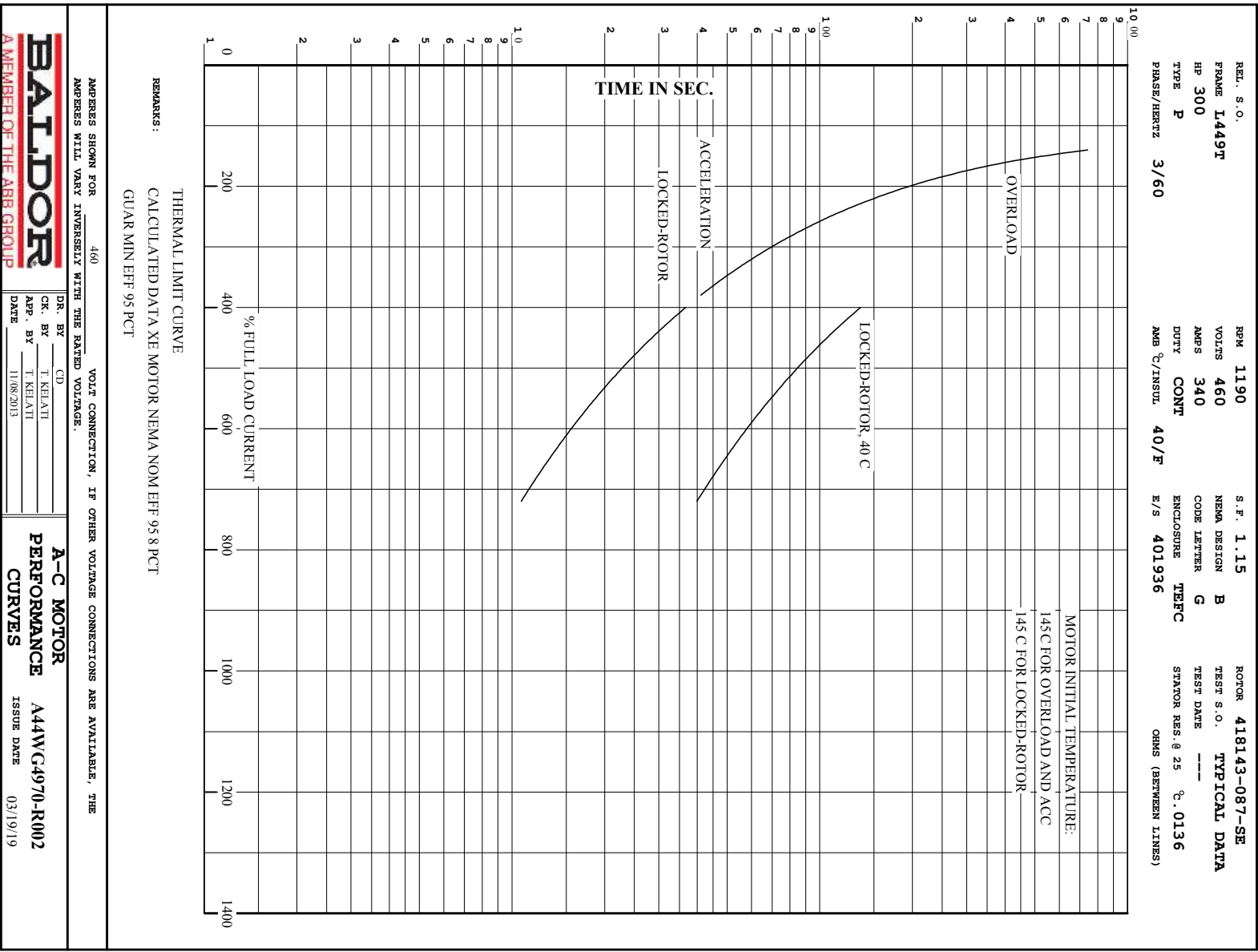


BALDOR
 A MEMBER OF THE ABB GROUP

DR. BY CD
 CK. BY T. KEHATI
 APP. BY T. KEHATI
 DATE 11/08/2013

A-C MOTOR
PERFORMANCE
CURVES
A44WC4970-R002
 ISSUE DATE 03/19/19

Printed on 3/19/19 10:16 @ bengap01.baldor.com



BALDOR
 A MEMBER OF THE ABB GROUP

| | |
|---------|------------|
| DR. BY | CD |
| CK. BY | T. KELATI |
| APP. BY | T. KELATI |
| DATE | 11/08/2013 |

A-C MOTOR
PERFORMANCE
CURVES

A44W/C4970-R002
 ISSUE DATE 03/19/19

617423-200

DUTY MASTER ALTERNATING CURRENT MOTORS

SQUIRREL-CAGE INDUCTION

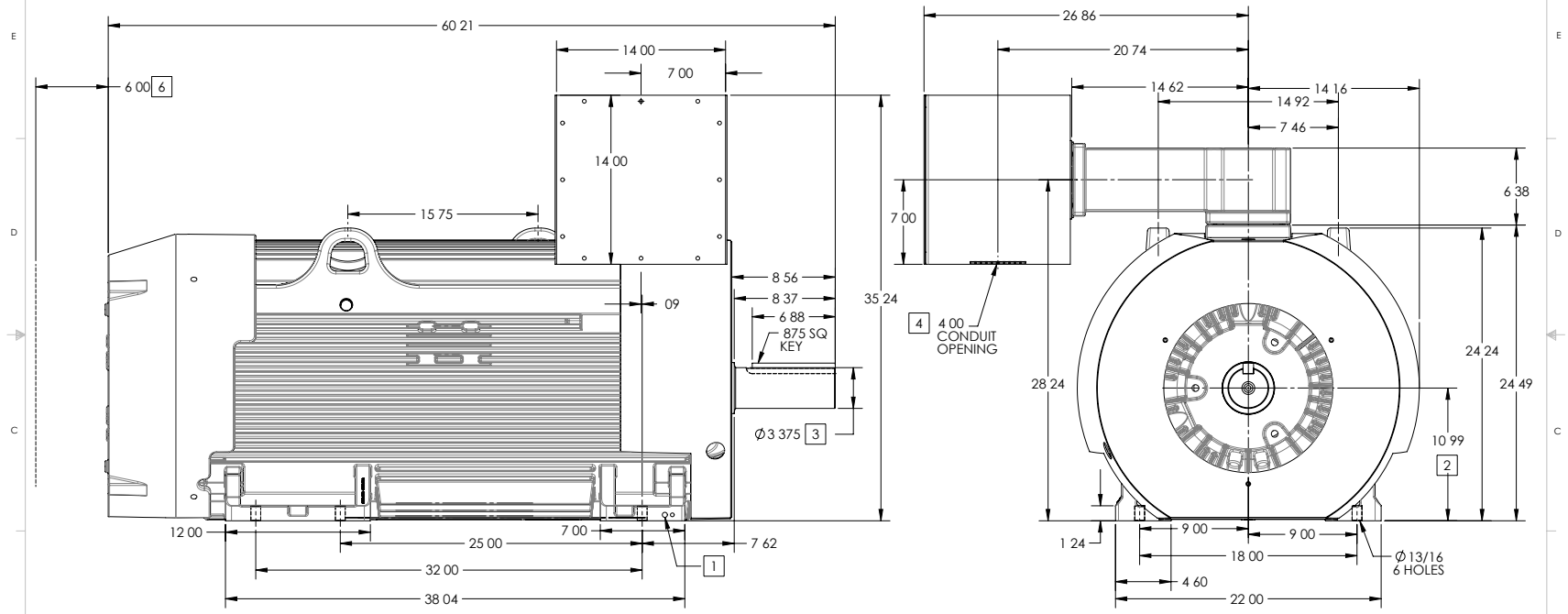
ENCLOSURE: TOTALLY ENCLOSED

FRAME GL449T ABOVE NEMA RATINGS

COOLING: FAN COOLED

MOUNTING: FOOT

INCLUDES G449T FRAME MOUNTING HOLES



- 1 GROUND HOLES QTY 1 1/2-13 TAP; QTY 1 3/8-16 TAP
- 2 VARIES + 00 - 06
- 3 VARIES + 000 - 001
- 4 FABRICATED STEEL CONDUIT BOX WITH AN OPENING FOR CONDUIT
- 5 MOTOR WEIGHTS MAY VARY BY 15% DEPENDING ON RATING
- 6 OBSTRUCTION MUST NO ENCROACH ON AIR INLET

CONDUIT BOX LOCATED ON OPPOSITE SIDE WHEN F-2
 IF MOUNTING CLEARANCE DETAILS ARE REQUIRED CONSULT FACTORY
 MAXIMUM PERMISSIBLE SHAFT RUNOUT WHEN MEASURED AT END OF
 STANDARD SHAFT EXTENSION IS .003 T I R TO 5 INCH DIA

WEIGHT (LBS): 3875

DRIVE END AIR DEFLECTOR IS ONLY INCLUDED WHEN NECESSARY

DIMENSIONS ARE IN INCHES; SEE SHEET 2 FOR DIMENSIONS IN MILLIMETERS

CUSTOMER IS RESPONSIBLE FOR DETERMINING THAT MOTOR PERFORMANCE IS SUITABLE IN THE APPLICATION

| | | | |
|------------------------|----------------------------|------------------|--|
| REV. DESC: NEW DRAWING | | | |
| REV. VERSION 00 | REVISED 12 31 00 09 22 201 | TDR 000000871203 | |
| MODEL NO. 617 23-200 | | REF | |
| BY RAGEC | Material | | |

BALDOR

DIM SHEET GL 9T/ 9T FOOT MOUNTED HORIZONTAL 1 XI X12 CBOX

00C-23219

617423-200

DUTY MASTER ALTERNATING CURRENT MOTORS

SQUIRREL-CAGE INDUCTION

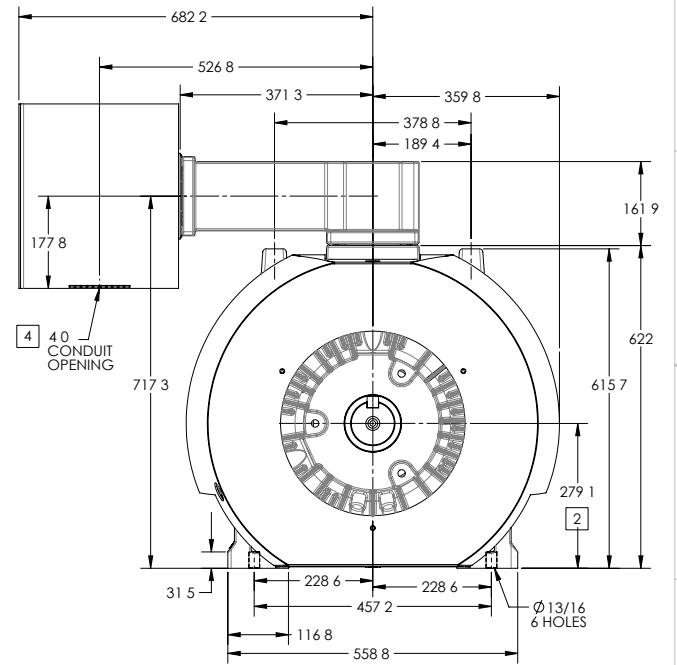
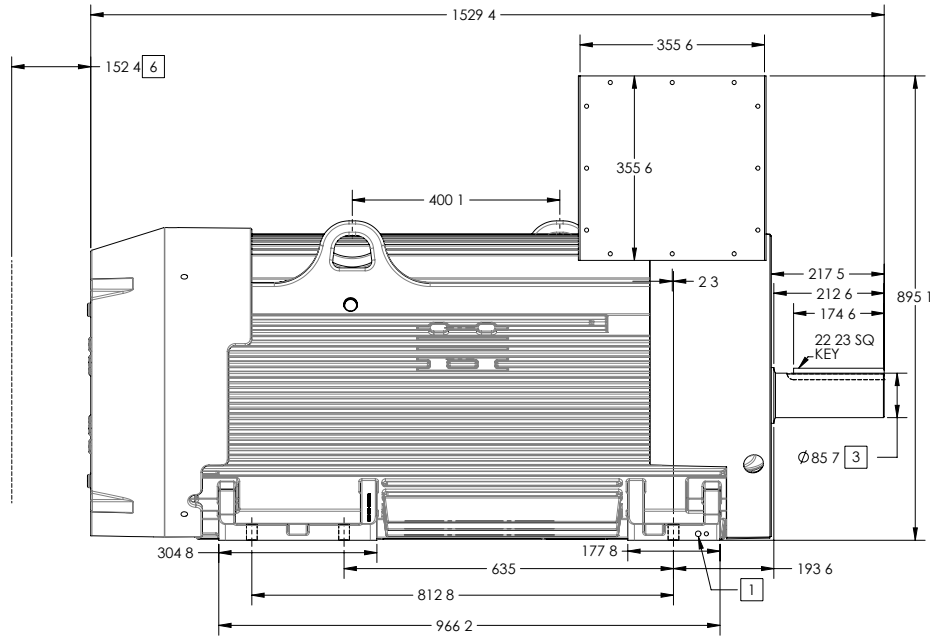
ENCLOSURE: TOTALLY ENCLOSED

FRAME GL449T ABOVE NEMA RATINGS

COOLING: FAN COOLED

MOUNTING: FOOT

INCLUDES G449T FRAME MOUNTING HOLES



- 1 GROUND HOLES QTY 1 1/2-13 TAP; QTY 1 3/8-16 TAP
- 2 VARIES + 00 - 06
- 3 VARIES + 000 - 001
- 4 FABRICATED STEEL CONDUIT BOX WITH AN OPENING FOR CONDUIT
- 5 MOTOR WEIGHTS MAY VARY BY 15% DEPENDING ON RATING
- 6 OBSTRUCTION MUST NO ENCROACH ON AIR INLET

CONDUIT BOX LOCATED ON OPPOSITE SIDE WHEN F-2
 IF MOUNTING CLEARANCE DETAILS ARE REQUIRED CONSULT FACTORY
 MAXIMUM PERMISSIBLE SHAFT RUNOUT WHEN MEASURED AT END OF
 STANDARD SHAFT EXTENSION IS .08 MM T I R TO 127 MM DIA

WEIGHT (KGS): 1760

DRIVE END AIR DEFLECTOR IS ONLY INCLUDED WHEN NECESSARY

DIMENSIONS ARE IN MILLIMETERS; SEE SHEET 1 FOR DIMENSIONS IN INCHES

CUSTOMER IS RESPONSIBLE FOR DETERMINING THAT MOTOR PERFORMANCE IS SUITABLE IN THE APPLICATION

| | | |
|-----------|--------------------|------------------|
| REV. | DESC. | NEW DRAWING |
| REV. | VERSION | 00 |
| REVISED | 12 31 00 09 22 201 | TDR 000000871203 |
| MODEL NO. | 617 23-200 | REF |
| BY | RAGEC | Material |

BALDOR

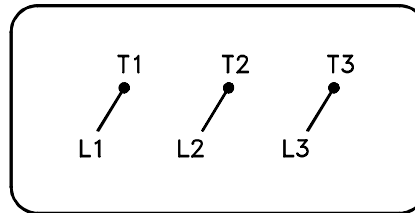
DIM SHEET GL 9T/ 9T FOOT MOUNTED HORIZONTAL 1 X1 X12 CBOX

00C-23219

617423-200

416820-036

A-C MOTOR
 CONNECTION DIAGRAM
 STANDARD 3 LEAD CONNECTED



(N.P. 1575-BA)

416820-036

| | | |
|--------------------------------------|------------------------------|-------------------|
| REV. DESC: LOADED TO BUS, C/R 335225 | | |
| REV. LTR: - | VERSION: 00 | TDR: 000000538207 |
| FILE: \MGA\00000\682 | REVISED: 11:54:06 04/30/2010 | |
| MTL: - | BY: RAGRA | |

BALDOR

CONN DIAG - STANDARD 3 LEAD

SH 1 of 1

Marketing maintained PDF of MN408:

[MN408?ManNumber=MN408](#)

Marketing maintained PDF of MN416:

[MN416?ManNumber=MN416](#)